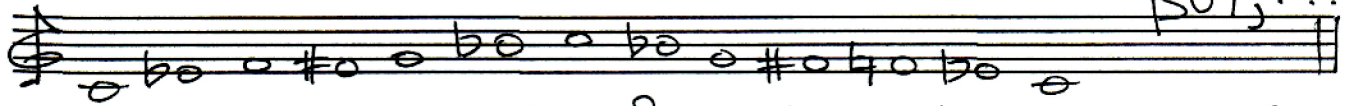
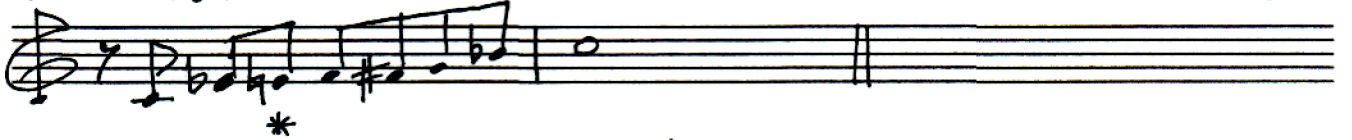


BLUSEY THINGS

BLUES SCALE



NOTE!!! THE MAJOR 3RD & THE MAJOR 7th IS COOL!



DISPLACED:



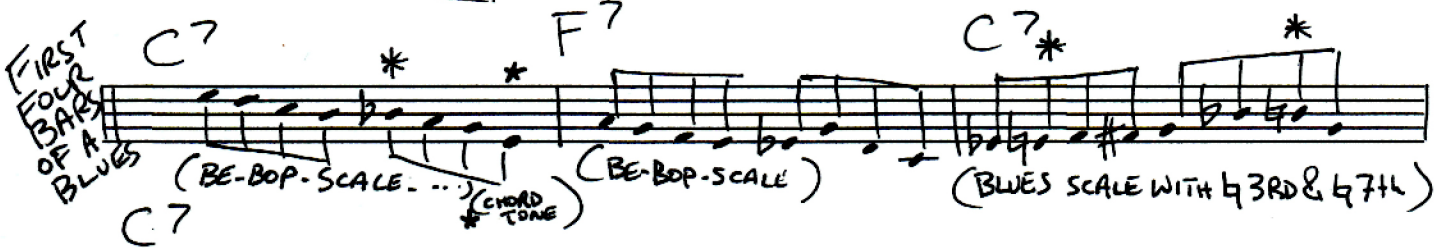
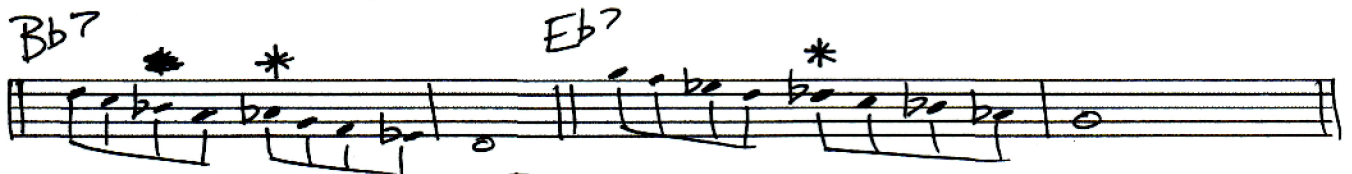
"C" blues example:



BE-BOP SCALE

(A MAJOR SCALE WITH THE FLAT 7 ADDED)

MOST COOL STARTING FROM THE MAJOR 3RD GOING DOWN, (examples below):



FIRST FOUR BARS OF A BLUES

(BE-BOP SCALE...), (BE-BOP SCALE), (BLUES SCALE WITH b3RD & b7th)



(CHORD TONE)